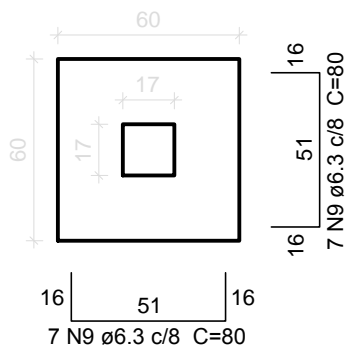


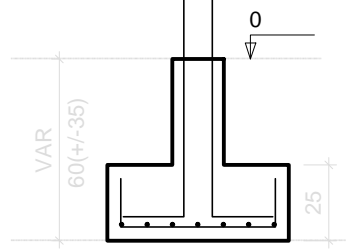
Fundação

S1=S2=S3=S4

PLANTA
ESC 1:25

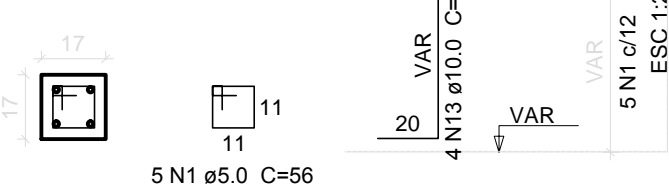


CORTE
ESC 1:25



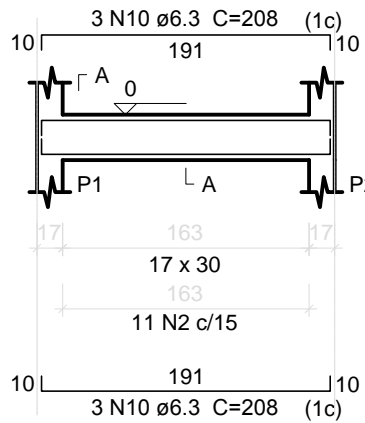
P1=P2=P3=P4

BALDRAME - L1
ESC 1:20

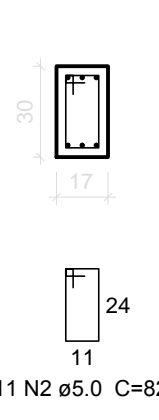


V1

ESC 1:50

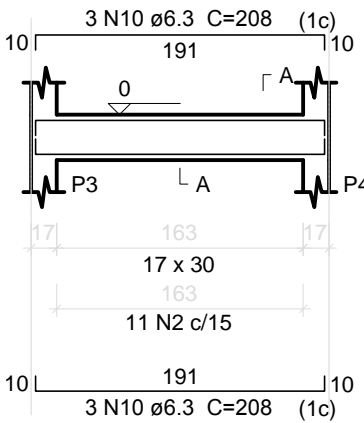


SEÇÃO A-A
ESC 1:25

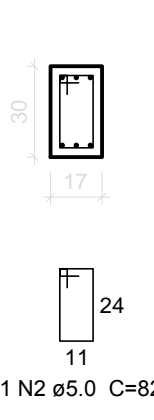


V2

ESC 1:50

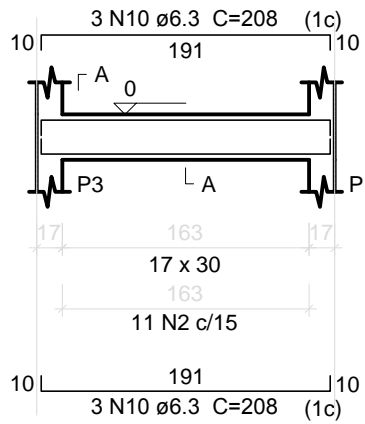


SEÇÃO A-A
ESC 1:25

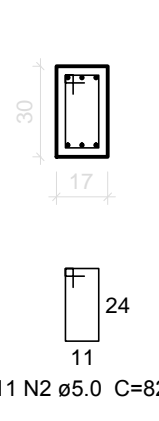


V3

ESC 1:50

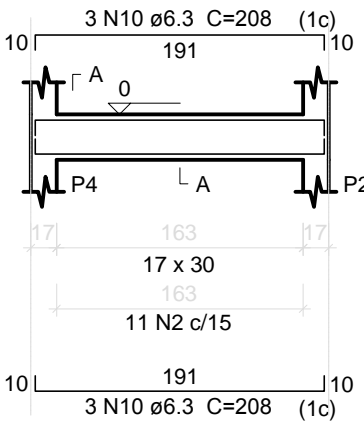


SEÇÃO A-A
ESC 1:25

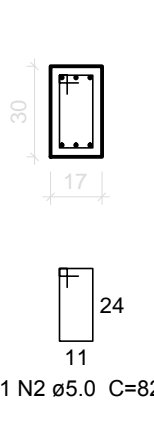


V4

ESC 1:50



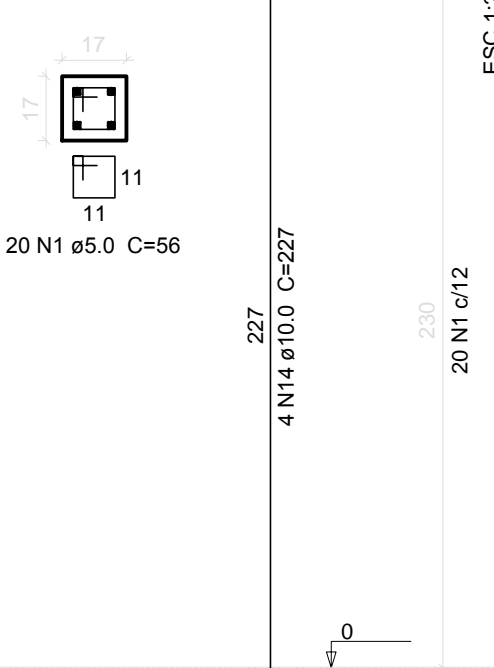
SEÇÃO A-A
ESC 1:25



Amarração

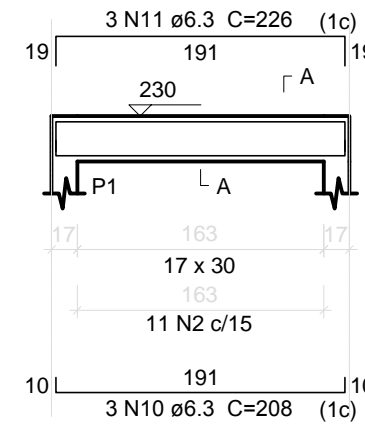
P1=P2=P3=P4

TÉRREO - L2
ESC 1:20

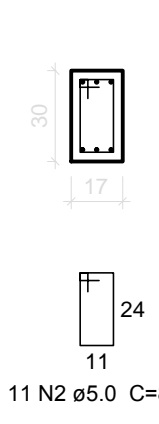


V1

ESC 1:50

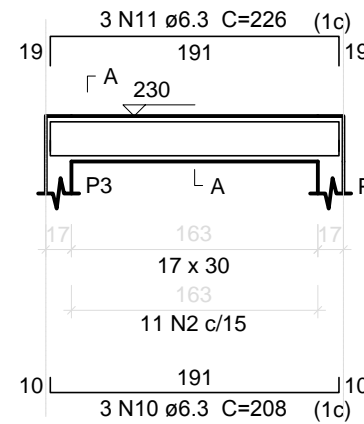


SEÇÃO A-A
ESC 1:25

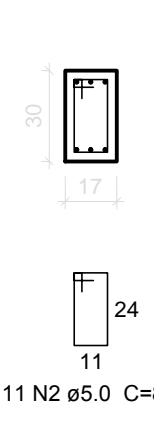


V2

ESC 1:50

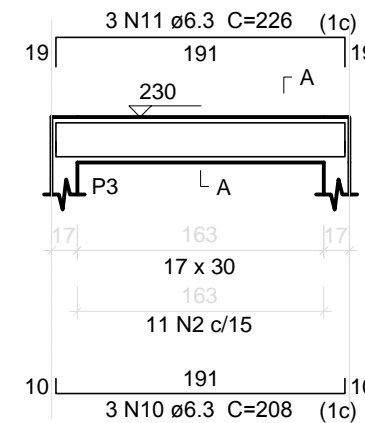


SEÇÃO A-A
ESC 1:25

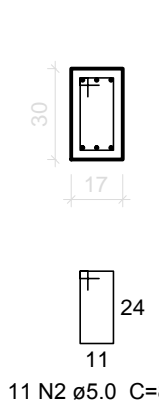


V3

ESC 1:50

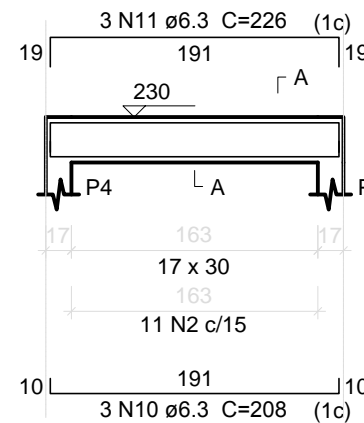


SEÇÃO A-A
ESC 1:25

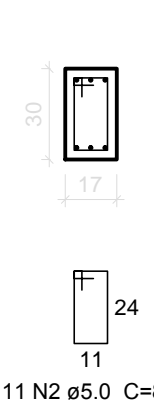


V4

ESC 1:50



SEÇÃO A-A
ESC 1:25



Relação do aço

AÇO	N	DIAM (mm)	QUANT	C.UNIT (cm)	C.TOTAL (cm)
CA60	1	5.0	100	56	5600
	2	5.0	88	82	7216
	3	5.0	40	191	7640
	4	5.0	9	180	1620
	5	5.0	13	225	2925
	6	5.0	14	209	2926
	9	6.3	56	80	4480
	10	6.3	36	208	7488
	11	6.3	12	226	2712
	12	6.3	27	64	1728
	13	10.0	16	VAR	VAR
	14	10.0	16	227	3632

Resumo do aço

AÇO	DIAM (mm)	C.TOTAL (m)	PESO + 10 % (kg)
CA50	6.3	164.1	44.2
	10.0	54.3	36.8
CA60	5.0	279	47.3
PESO TOTAL (kg)			
CA50	81		
CA60	47.3		

Volume de concreto (C-25) = 2.08 m³
Área de forma = 29.5 m²



UNIDADE DE GERENCIAMENTO DE PROJETOS

PROGRAMA PROINFÂNCIA - PROJETO TIPO 2

PROJETO ESTRUTURAL - CASA DE MEDIÇÃO - EMEI'S

EQUIPE TÉCNICA DA UGP

Eng. Civil Mirela de Faria - CREA.RS 146401
Eng. Civil Vinicius Ferreira - CREA.RS 150330
Arq. Elise Dutra - CAU A 46844-4
Arq. Estela Halpern - CAU A 42815-9

Av. Ferreira Viana, nº. 1135, Areal, CEP 96085-000, Pelotas/RS - Tel.: (053) 3227 15 13
Site: www.pelotas.rs.gov.br - E-mail: ugp@pelotas.com.br

Prancha

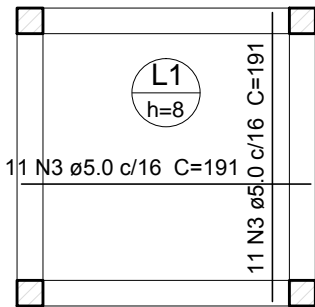
03/14

Escala

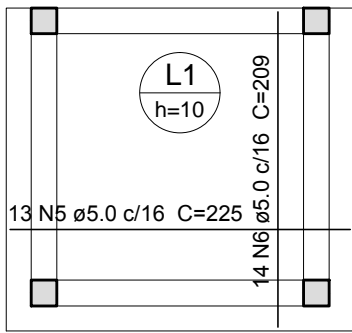
INDICADA

Data

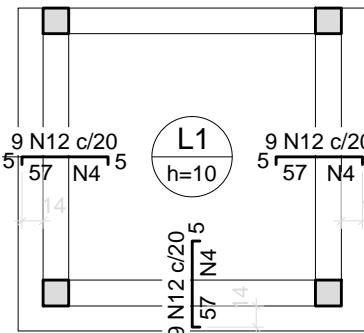
FEV / 2016



Armção positiva da
laje do pavimento
Baldrame
Escala 1:50



Armção positiva da
laje do pavimento
Térreo
Escala 1:50



Armção negativa da
laje do pavimento
Térreo
Escala 1:50